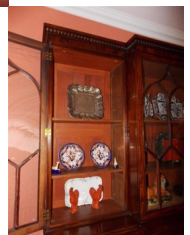
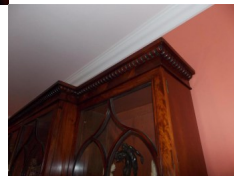
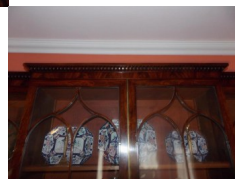
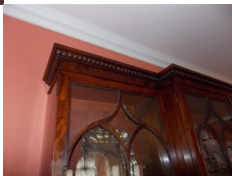


English # 4066





English Chippendale Mahogany Breakfront With Secretary, Circa 1790

Rating: Not Rated Yet

Price

[Ask a question about this product](#)

Description

English Chippendale mahogany breakfront with carved molded cornice, four upper case glass doors with arched oval mullions, adjustable interior shelving, lower case concealing a sliding fall front desk, flanking drawers with original brasses and carved floral four-door cabinets with interior shelving resting on a raised molded edge plinth. All original, Late 18th century. Leather can be added to desk @ minimal cost . Breakfront is 110.5" wide at base.

\$ 70,000 Retail

OF THE PERIOD: George III

PLACE OF ORIGIN: England

DATE OF MANUFACTURE: Circa 1790

MATERIALS AND TECHNIQUES: Cast Brass, Hand-Crafted Glass, Hand-Carved Mahogany

CONDITION: Excellent

WEAR: Wear consistent with age and use

HEIGHT: 98.5 in. (250 cm)

WIDTH: 112 in. (284 cm)

DEPTH: 23 in. (58 cm)

Golden & Associates Antiques

206 King St. Charleston, SC 29401

Gldnassoc@aol.com

Reference Number: # 4066